

# Location, Location, Location – CRD Climate Projections

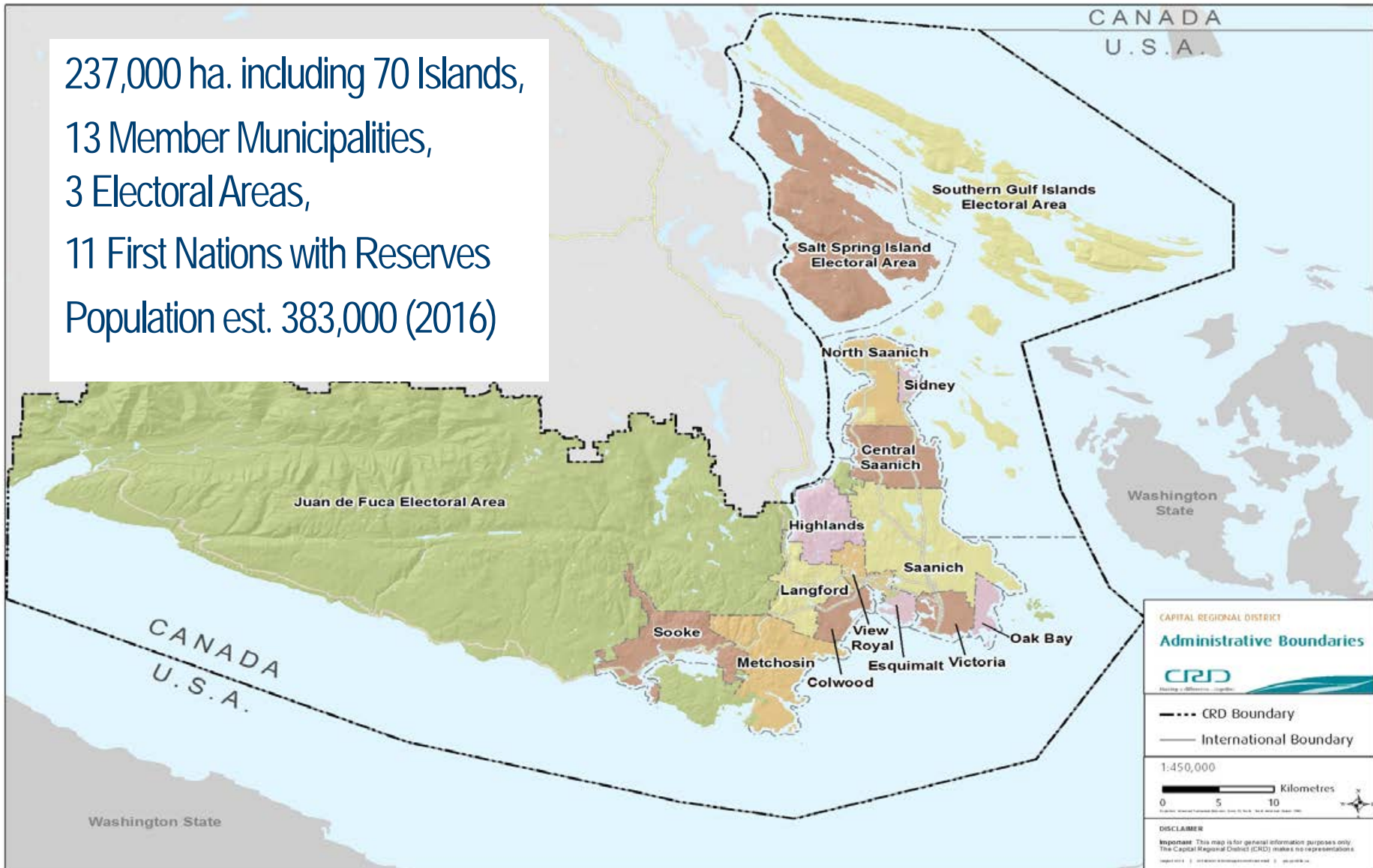
Nikki Elliott

CRD Climate Action Program Coordinator

October 25, 2018

# The Region

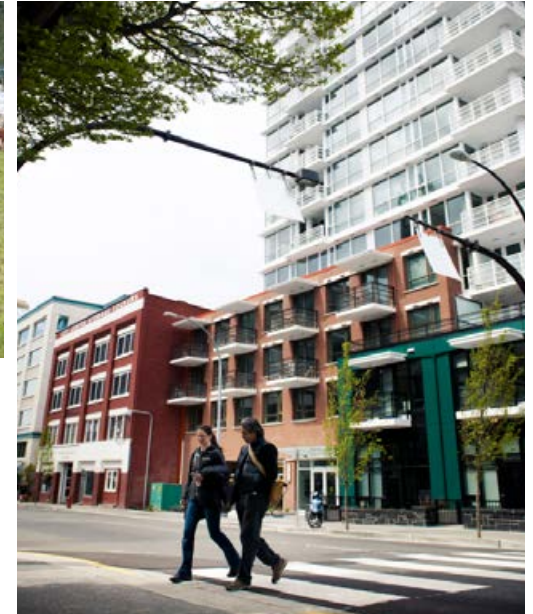
237,000 ha. including 70 Islands,  
13 Member Municipalities,  
3 Electoral Areas,  
11 First Nations with Reserves  
Population est. 383,000 (2016)



# A Diverse Region

- Urban to rural
- Provincial government
- Department of National Defence
- Parks
- Ferry terminals & airport
- Hospitals
- Post secondary institutions
- School districts
- Supportive housing
- Businesses

## Diverse Built and Natural Environments

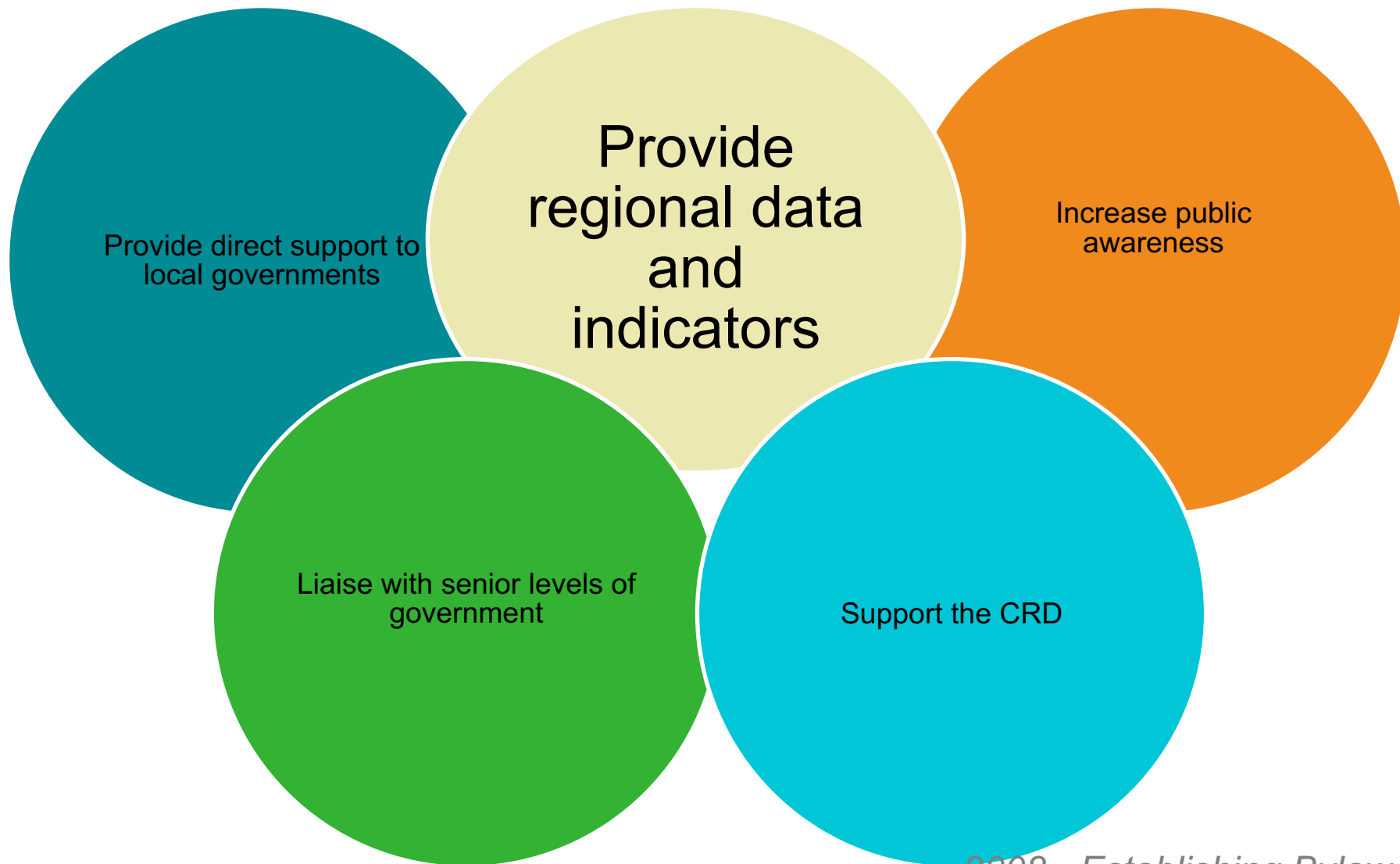


# A Diverse Organization

- 24-member Board
- 200 services, including:
  - Wastewater management
  - Drinking water
  - Regional parks
  - Social housing
  - Landfill & recycling
  - Environmental protection
  - Emergency preparedness
  - Education & outreach
- 33,600 hectares of land
- 618 structures

Regional Government





- Internal Plans (ex. 2012 Strategic Plan for the GVWSS)
- Climate Change - Board Strategic Priority
- Corporate Climate Action Strategy
- Regional Climate Action Strategy
- Inter-Municipal Staff Priority



# Study Scope

CRD

The image shows a screenshot of the Pacific Climate Impacts Consortium (PCIC) website. The top navigation bar includes 'HOME', 'CONTACT', and 'SEARCH'. Below the navigation bar, there are links for 'ABOUT PCIC', 'DATA PORTAL', 'ANALYSIS TOOLS', and 'RESOURCES'. The main content area features a large image of a lighthouse and a building, with the text 'Communicating Research Findings and Supporting Planning'. On the left side, there is a sidebar with 'ANALYSIS TOOLS' and a list of tools: 'Plan2Adapt', 'Regional Analysis Tool', and 'Seasonal Maps'. Below this, there is a section for 'PLANZADAP' with a description of the tool and a 'TOOL QUICK STAR' section. The 'SETTINGS' section includes a 'Region' dropdown menu set to 'Capital', a 'Time Period' dropdown menu with options for '2020s (20)', '2050s (204)', and '2080s (20)', and a 'CENTRE' button. Below the settings, there is a large image of a sculpture in a wetland, and a report cover titled 'CLIMATE PROJECTIONS FOR THE CAPITAL REGION' with the date 'APRIL 2017'. The CRD logo is visible in the bottom right corner of the report cover.

Develop a common set of local temperature and precipitation projections based on latest climate science.

Signal regional impacts for further study.

- Metro Vancouver example
- Core project team
- Multiple internal funders
- 15 CRD divisions/programs engaged
- Municipal contributors
- Shared learning with CVRD
- Technical contributors





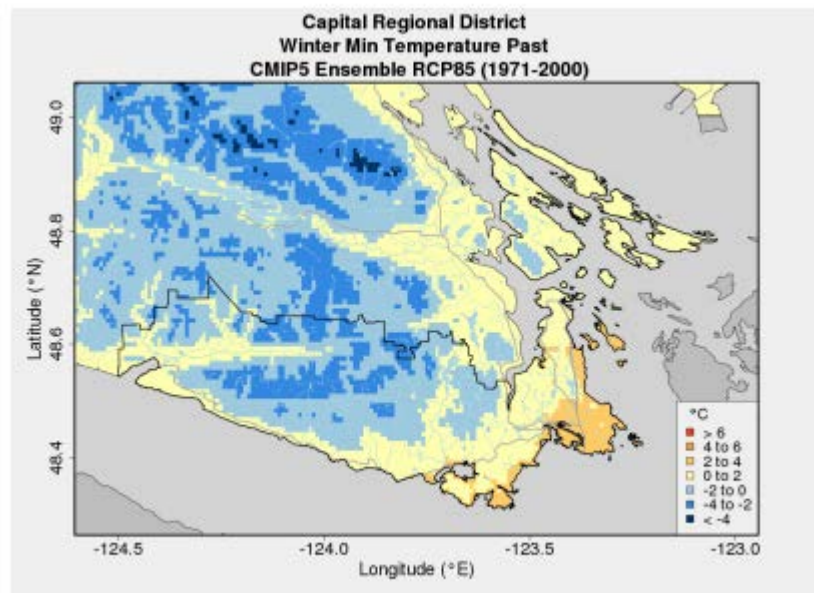


Figure 3: Winter Average Nighttime Low Temperature - Past

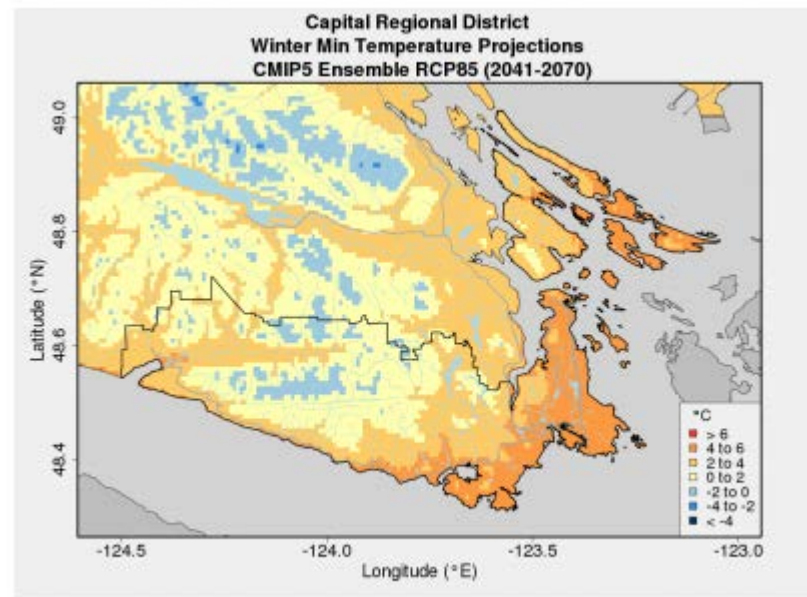
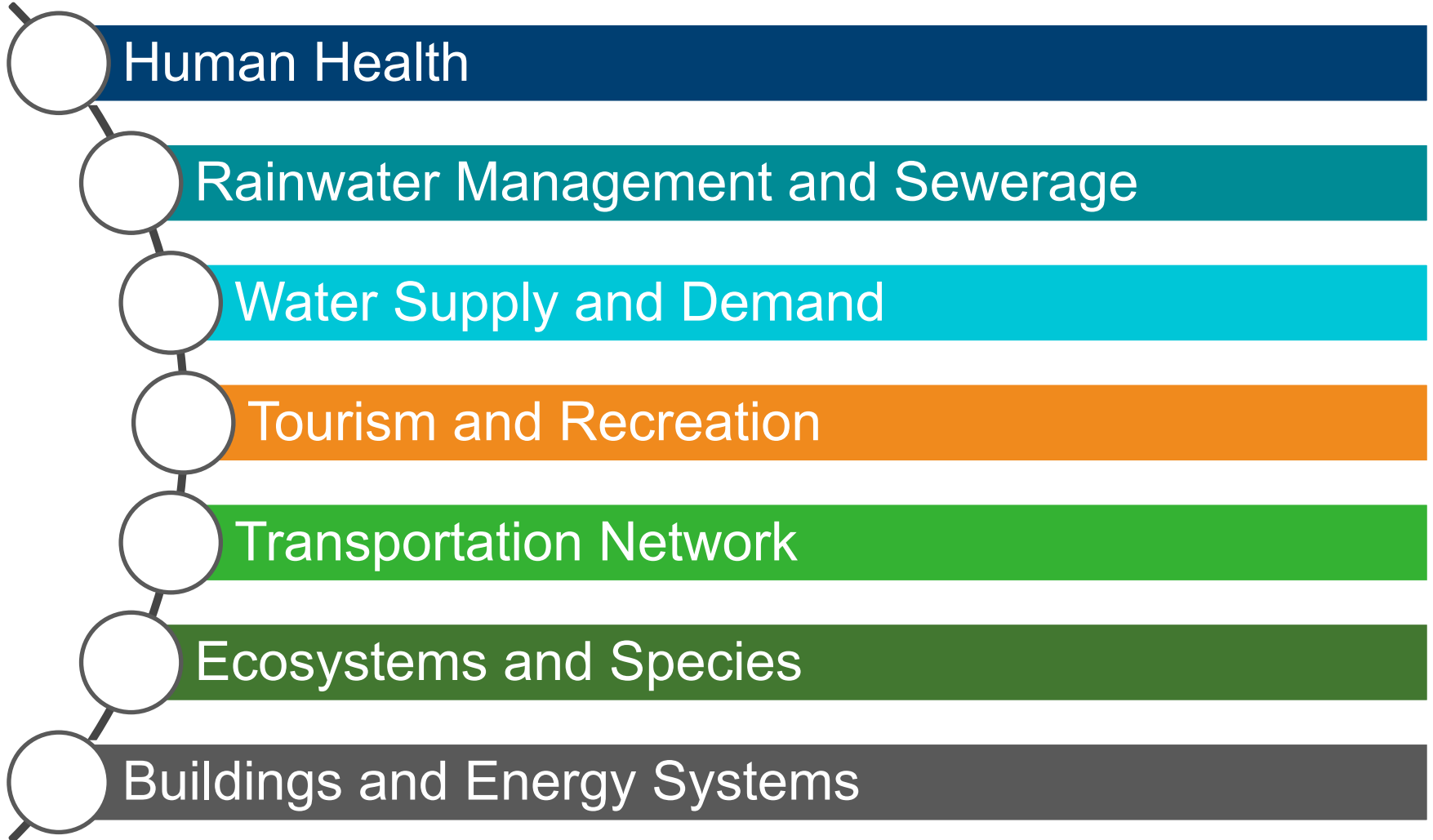


Figure 4: Winter Average Nighttime Low Temperature - Future (2050s)

- Plus 23 more...



- CRD Board presentation
- Inter-municipal networks (staff and Councils)
- Staff and community presentations & training
- Website
- CRD Information bulletin
- In-kind media

### Greater Victoria summers to get much hotter by 2050s: report

BILL CLEVERLEY / TIMES COLONIST  
MAY 31, 2017 05:00 AM



Paddlers and beachcombers at Island View Beach last summer. Greater Victoria can expect the number of summer days above 25 C to triple, from an average of 12 to 36 days per year, by the 2050s, says a report. Photograph By DARREN STONE, Times Colonist

Hot summer days in Greater Victoria will increase dramatically by the 2050s, say climate researchers in a report prepared for the Capital Regional District.

“Our region can expect the number of summer days above 25 C to triple, from an average of 12 to 36 days per year,” says the report.

# Multiple Uses and Users...

Watershed  
Protection –  
Adaptation  
Plan &  
Analysis

Environmental  
Resource  
Management -  
Water Balance  
Model

Education  
&  
Outreach

Golf course  
stormwater  
plan

Water Quality  
- Drinking  
Water Analysis

Environmental  
Engineering –  
Sewer Model  
Bylaw Analysis

Gulf Island  
Water  
Demand  
Study

Municipal  
climate risk  
assessment

Municipal  
Sewer  
Master  
Plan

Corporate  
–Climate  
Lens  
Review

Environmental  
Protection –  
Green  
Infrastructure  
Guidelines

Municipal  
Climate Plans

Municipal  
Sewer  
Master  
Plan

Island Health  
Vulnerability  
Mapping &  
Building Design

etc.....

- Continue to share
- Support integration in existing and future planning activities
- Communication
- Support further study



Freezing Days

18  
below 0°C

2041-2070

59

1971-2000



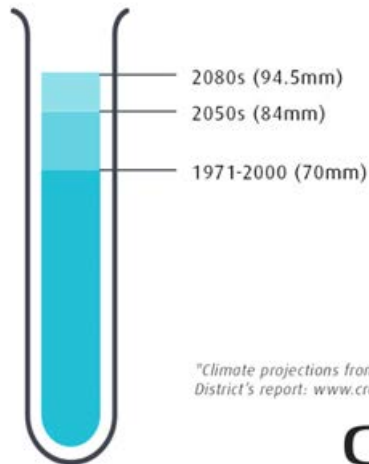
Dry Spells

22%  
more consecutive days  
without rain

2041-2070

## Rainstorms will grow more intense in the capital region.

MAXIMUM ONE-DAY RAINFALL

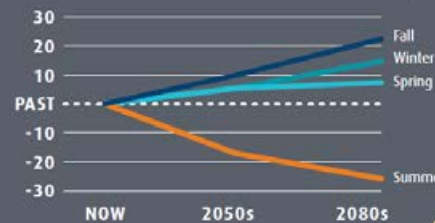


"Climate projections from the Capital Regional District's report: [www.crd.bc.ca/data](http://www.crd.bc.ca/data)



## Summer will be drier, fall and winter wetter in the Capital Region.

SEASONAL CHANGES IN PRECIPITATION (%)



**Design with nature.** Plant drought-tolerant, native plants and trees to support biodiversity, reduce water use and absorb rain.



# Thank you.

[www.crd.bc.ca/data](http://www.crd.bc.ca/data)